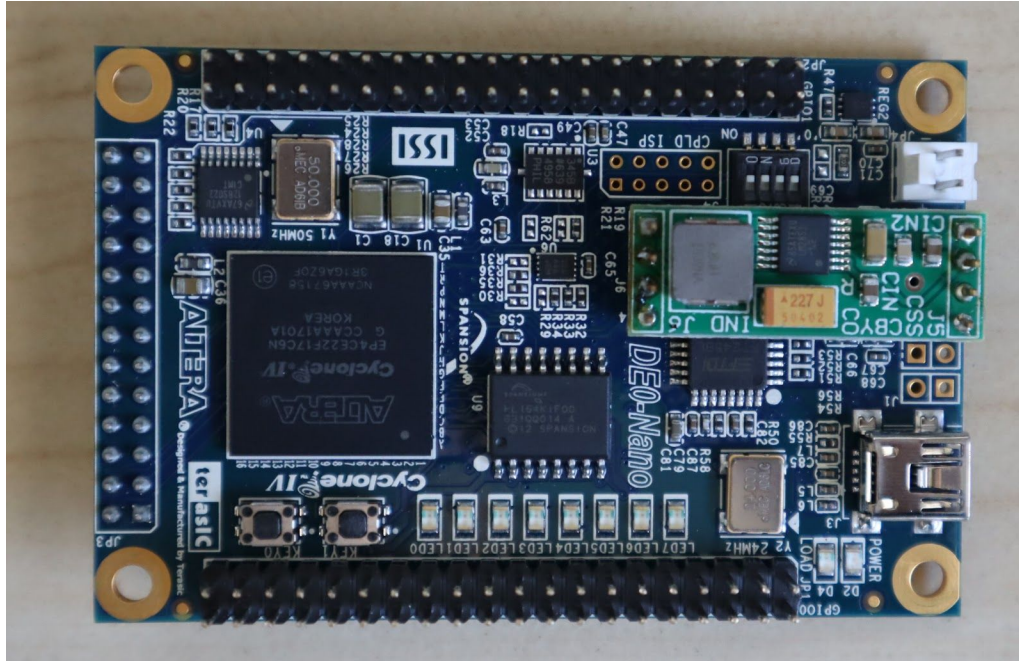


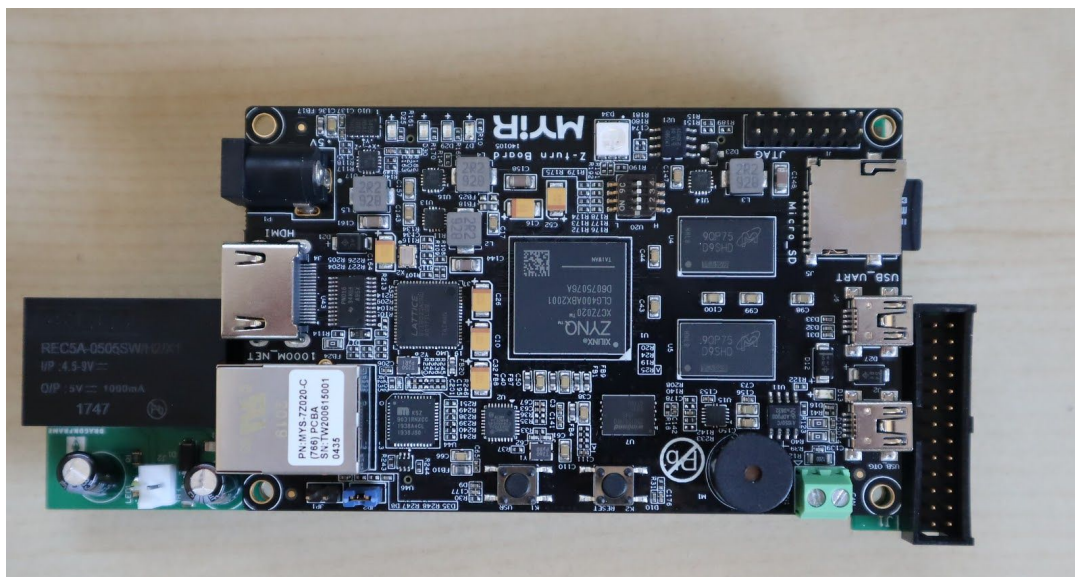
DMC-16 Z-Turn Instructions

We have sent you a replacement daughterboard for your DMC-16, along with a power cable. The new Z-Turn board from MYiR has a much more powerful and reliable processor than the DE0-Nano board you will be removing.

Here is the DE0-Nano board you will remove:



Here is the new Z-Turn board:



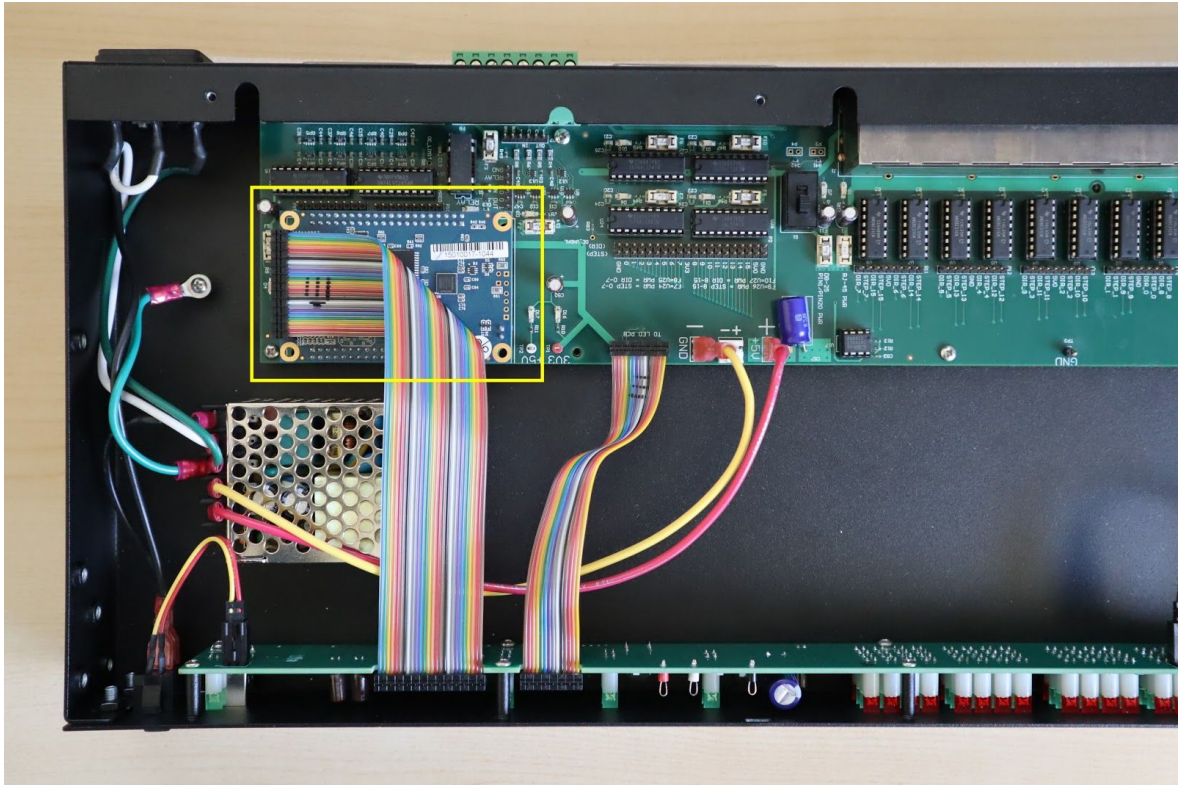
Please follow these instructions to replace the DE0-Nano in your device.

1. Unplug the DMC-16 and move it onto a clean workspace. If you have a soft cloth or piece of cardboard you can set it on, that will avoid any possible scratching of the surface.
2. Remove all four top screws **first**. The orange arrows in the following picture show these.

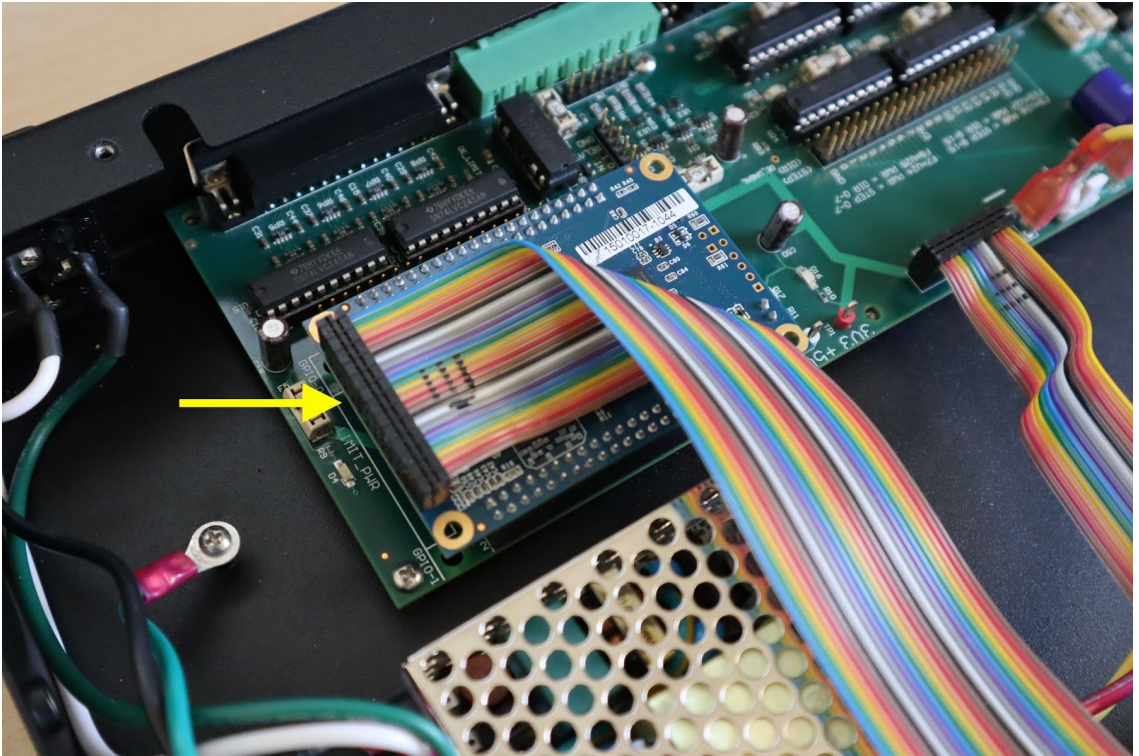


3. Remove all six of the side screws. The yellow arrows in the above picture mark these.

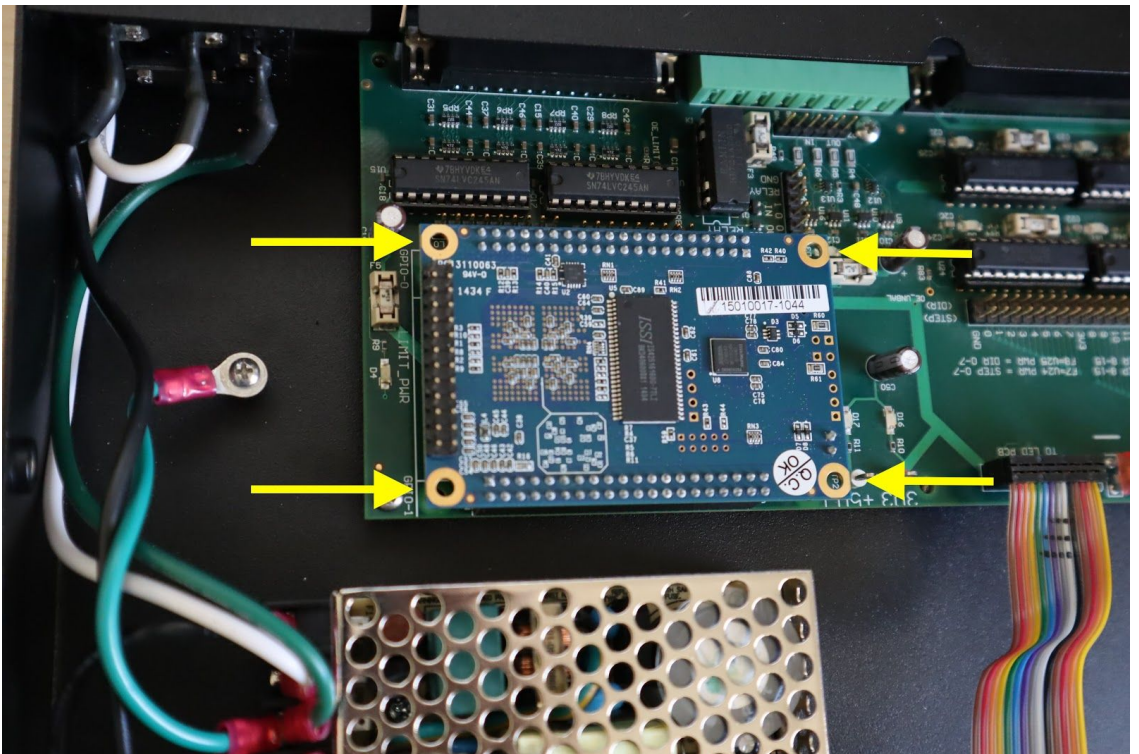
4. Remove the cover and carefully set it aside. You can see the DE0-Nano attached to the main PCBA.



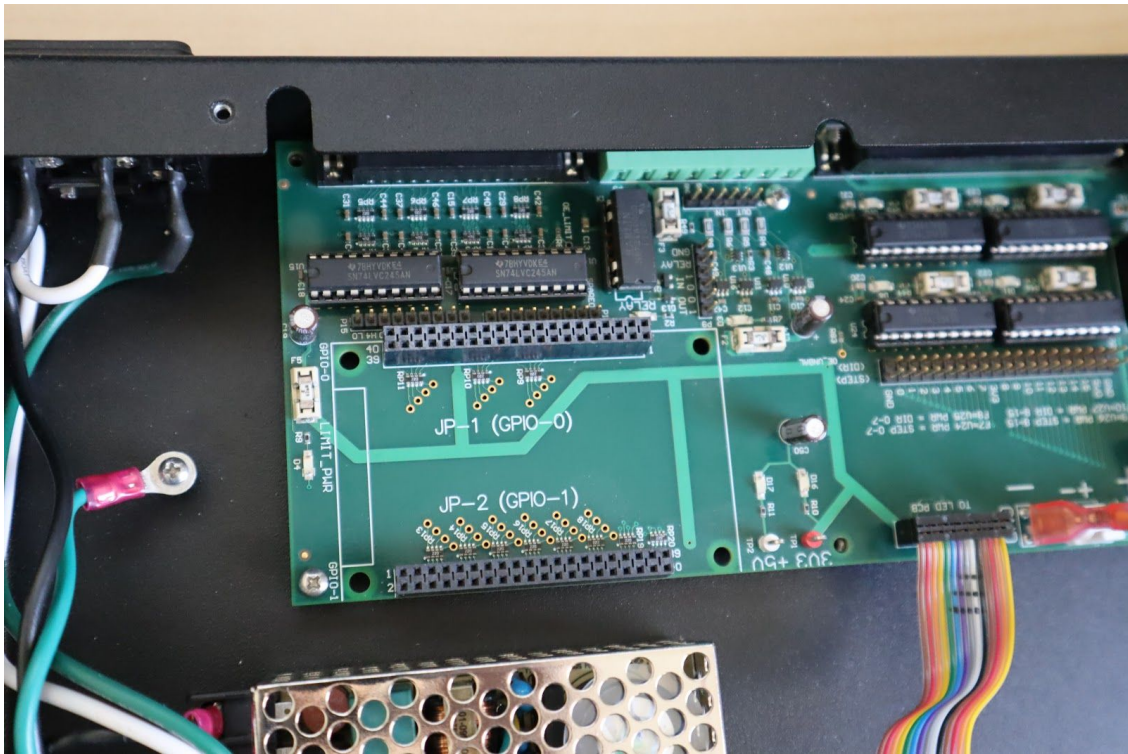
5. Carefully wiggle the black end of the rainbow connector to remove it from the DE0-Nano.



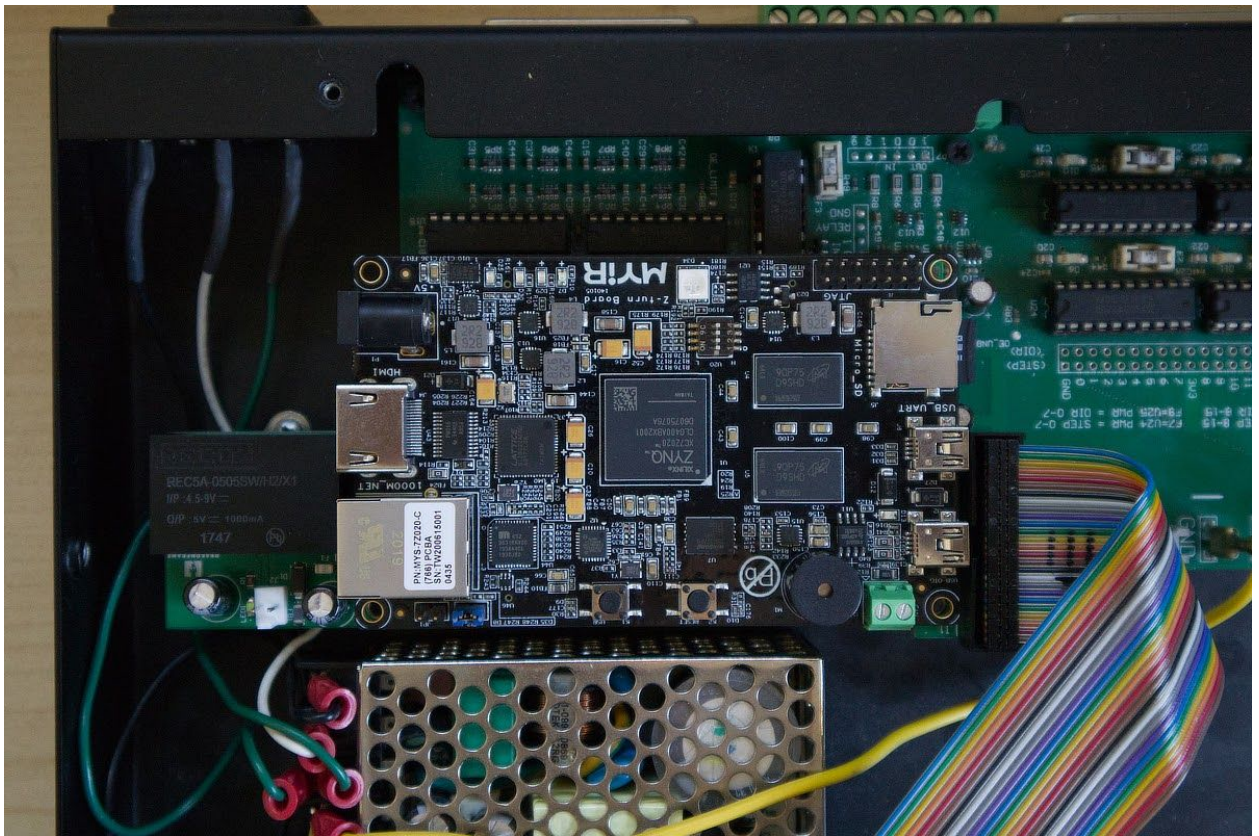
6. Put fingers under each of the four corners of the DE0-Nano, and gently wiggle it up out of the sockets.



7. Now you will see the exposed sockets for the DE0-Nano.



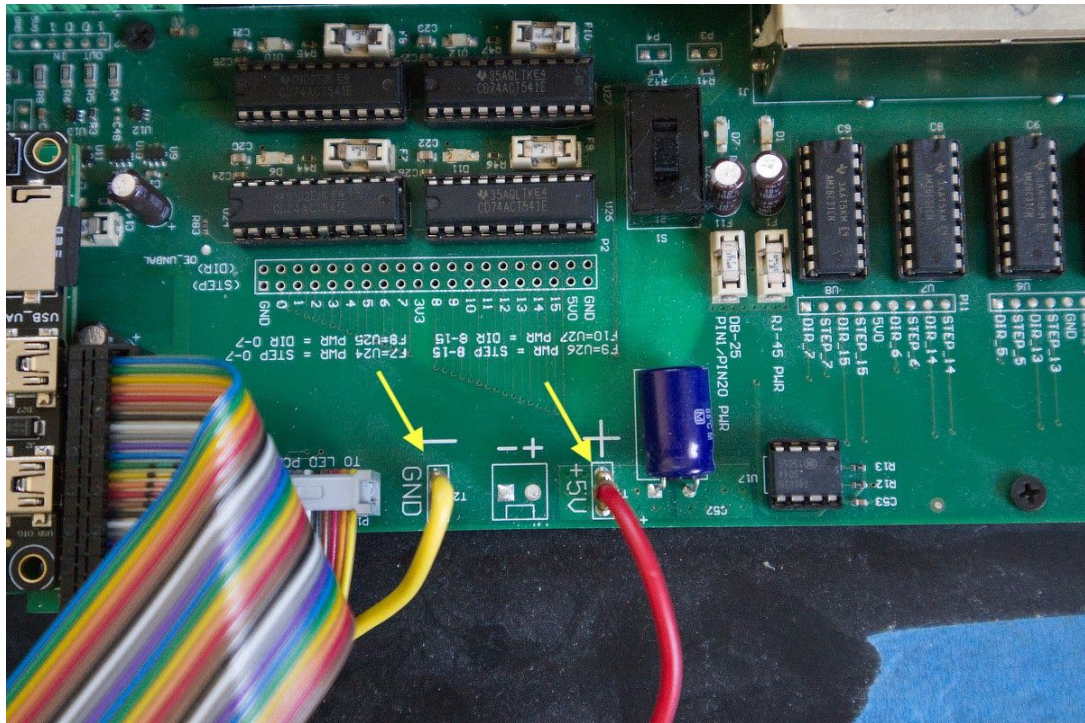
8. Insert the new Z-Turn very carefully into the slots. Refer to the picture below to make sure you have it oriented properly. Make sure all of the pins are lined up with the two bottom sockets before pushing it down securely.



9. Attach the black end of the ribbon connector. Again, make sure the pins are lined up properly before you push it securely into place. It will be tight, but it should fit.

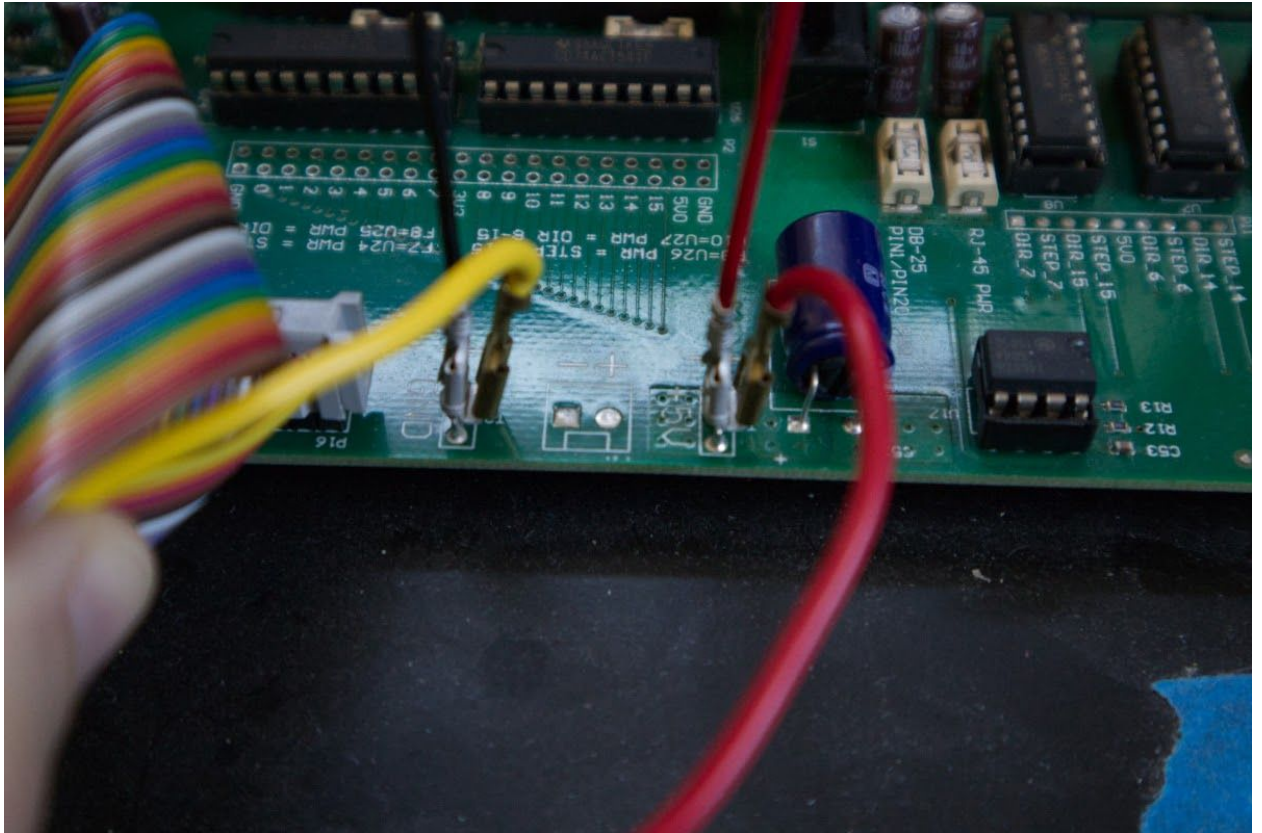
10. Now it is time to connect the power. You will be installing "piggy-back" connectors, so that power can go to the main PCBA and the new ZTurn board.

Here you can see the existing power connections.

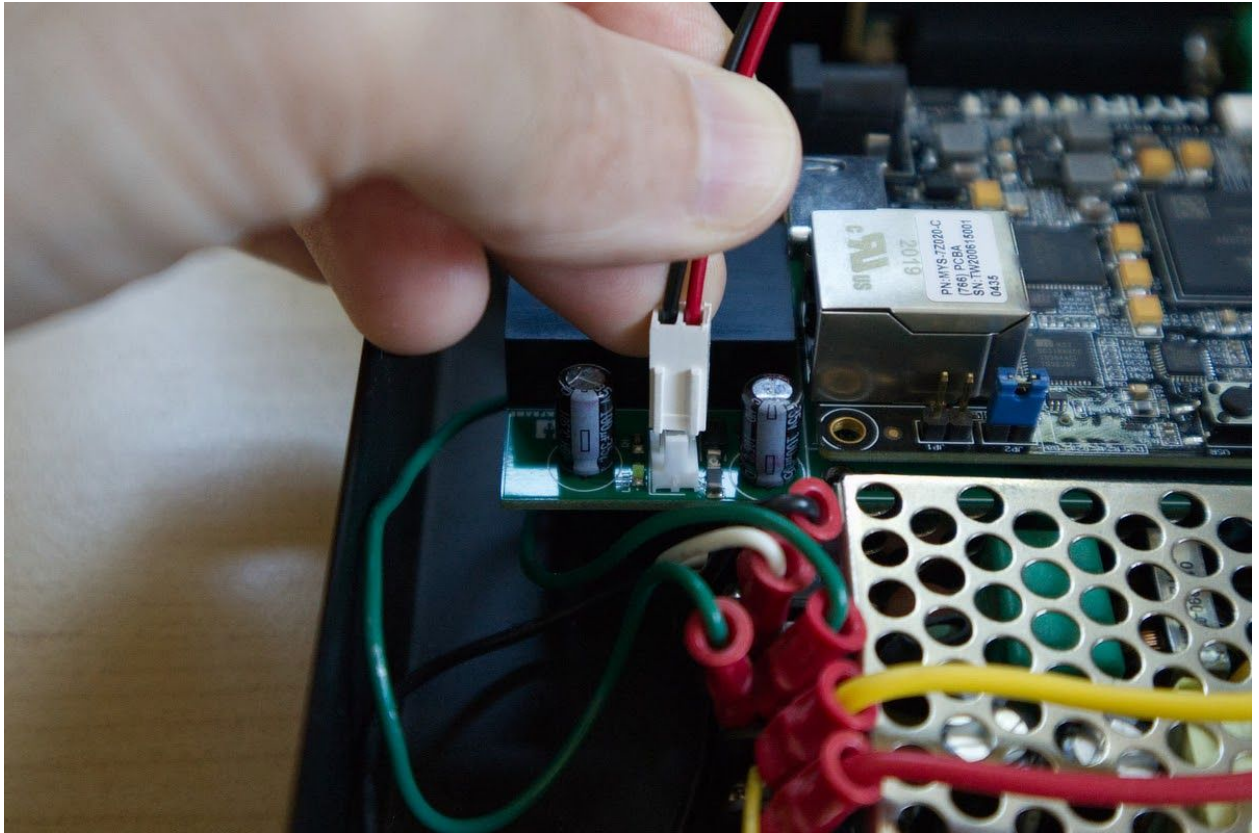


11. Start by removing the red tab, by slowly wiggling it up. This can be tough.
12. When it is off, take the red tab of the Z-Turn power cable and push it firmly into that spot.
13. Connect the original red tab into the "piggy-back" tab on the new power cable.

14. Repeat steps 11-13 for the yellow/black side. The end result should be like this:



15. Connect the white end of the new power cable to the Z-Turn board:



16. Place the cover back on the DMC-16.

17. Insert and tighten the six side screws.

18. Insert and tighten the four top screws.

19. Attach the power cord.

20. Turn on the device. You should see a light up sequence.